

# new! MESHVIEW <sup>3D</sup>

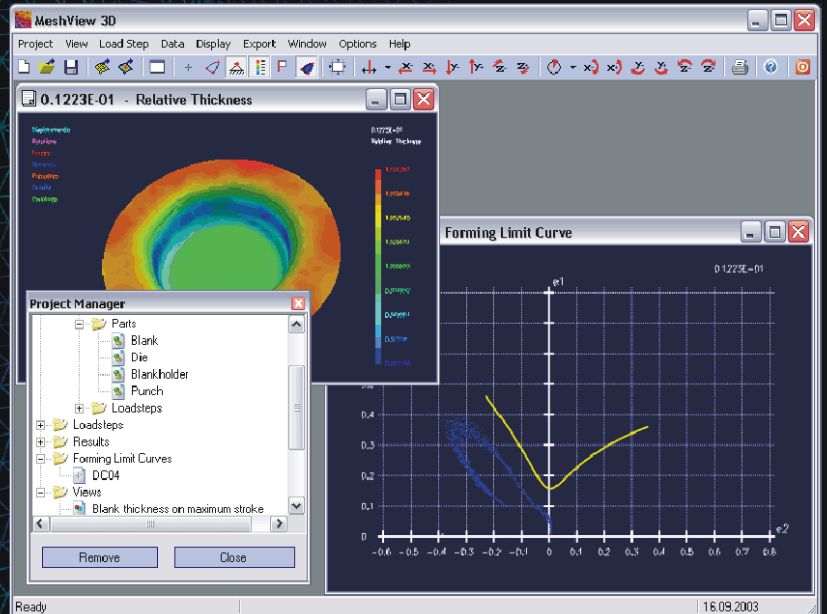
## The FEM-Viewer

### Supported File Formats:

ABAQUS ANSYS, FASTBLANK, FASTFORN, FLAVIA, I-DEAS, LS-DYNA 3D, LS-NIKE, MECHANICA, NASTRAN, PATRAN, STAMPACK, STL, Z88 (further file formats on demand)

### Features:

- Displaying of mesh and result data of FEM systems,
- Postprocessing of FEM data,
- Reading and storing of different results in one project file,
- Compression and thinning of model and result data,
- Displaying of forming limit diagrams and animations,
- Defining and applying of cuts,
- Defining and applying of views,
- Documentation of loadsteps, results and model data,
- Exporting of mesh files,
- Printing and exporting of images.



### Profits:

- Tessellated model and result data can be displayed and navigated independent from any FEM Program,
- With definable Views and Remarks "3-dimensional" Reports can be created for FEM simulations,
- By compression and thinning the file sizes can be reduced down to 2 to 10 % of the original file sizes,
- By this, simulation results can be archived very resource saving and can be given to your customers,
- Your customers can view the 3-dimensional simulation results without FEM System by using the MeshView3D program,
- Archived data can be easily viewed without using a FEM program and mesh files can be exported for further simulations,
- Images (bmp, gif, jpg) or HTML files can be created for reports and documentations.

### System Requirements:

- Pentium III or higher,
- MS Windows 2000, XP or Vista,
- MS .NET Framework 2.0 (contained in bundle)
- MS Internet Explorer 6.0 or higher,
- min. 512 MB RAM,
- min. 60 MB free HD.

**fepcon**  
creative solutions  
GmbH

Bussardstraße 30 / 1  
D - 71032 Böblingen  
Tel.: +49 (0)7031 / 204 55 - 80  
Fax: +49 (0)7031 / 204 55 - 86  
www.fepcon.de